

# IR Camera

## Operating Instruction

Model NO: **PZ0012**



Thank you for your purchase PZ series product. Before operating the unit, please read this instruction manual carefully to ensure proper use of the product. Please store this instruction manual in a safe place for future reference after you have read it.

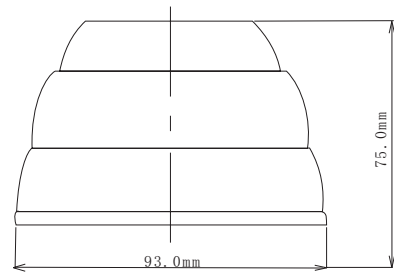
### PRODUCT FEATURE

1. 20 Built-in Infrared Lights
2. Electronic Shutter Control
3. Auto White Balance
4. High Picture Quality

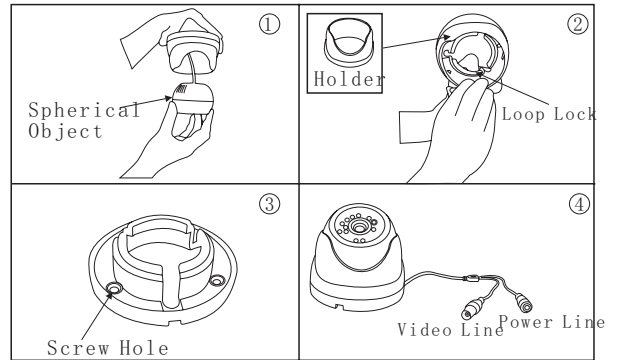
### CAUTION FOR SAFE OPERATION

1. Power supply
  - (1) Use only with a 12V DC power supply
  - (2) Be sure to connect each lead to the appropriate terminal. Wrong connection may cause malfunction and /or damage to the video camera.
2. Operating and storage locations
  - (1) Do not attempt to aim the camera at the sun or other extremely bright objects that cause smear to appear irrespective of whether the camera is operating or not. This can damage the CCD (Charge Coupled Device).
  - (2) Do not place the camera in the following locations.
    - Locations subjected to extremely high or low temperatures.
    - Locations subjected to high levels of humidity and dust.
    - Locations where there are large amounts of water vapor and steam.
    - Locations subjected to excessive vibrations.
  - (3) When this camera is installed near the equipment like wireless communication device which emits strong electromagnetic field, some irregularity such as noise on monitor Screen may happen.
  - (4) When plugging the power cord to an electric outlet, be sure to leave enough space around the outlet for easy access to the outlet for later turning the power on and off.
3. Handling of the unit
  - Do not allow the camera to be subjected to strong impacts or shocks. The camera could be damaged by improper handling or storage.
  - Never attempt to disassemble or modify the camera.
  - If an abnormality should happen to occur, immediately turn off the power and consult your dealer.

### DIMENSION



### INSTALLATION



- 1、Take hold of the spherical object and take it out.
- 2、Hold the Loop Lock on the base, and squeeze it hardly inward to separate the holder from the base.
- 3、Use screws to install the base to the place it needs.
- 4、Install the spherical object and its holder to the base and adjust the lens to the right angle.

### AVAILABLE MODELS

Model No	Serson	TV Lines
	1/4 SHARP CCD	420 TV Line
	1/4 SONY CCD	
	1/3 SHARP CCD	540 TV Line
		540TV Line
<b>Pz0012</b>	1/3 SONY CCD	600 TV Line

### SPECIFICATIONS

TV System	PAL/NTSC	
Sync System	Internal	
Mini Illumination	0Lux	
White Balance	Model	AUTO
	Range	3200~10000 K
Gain Control	AUTO	
S/N Ratio	≥50dB	
Electronic Shutter	1/50~1/12,000 second	
Video Out	Composite output 1.0V p-p at 75 ohm	
Gamma Correction	0.45	
Lens	3.6/6mm	
Operation Temp	-10 C~50 C	
Dimensions	75mm(H) * 93mm(φ)	
Power	DC12V	
IR range	20m	
Weight	200g	

\* Design and specifications are subject to change without notice.